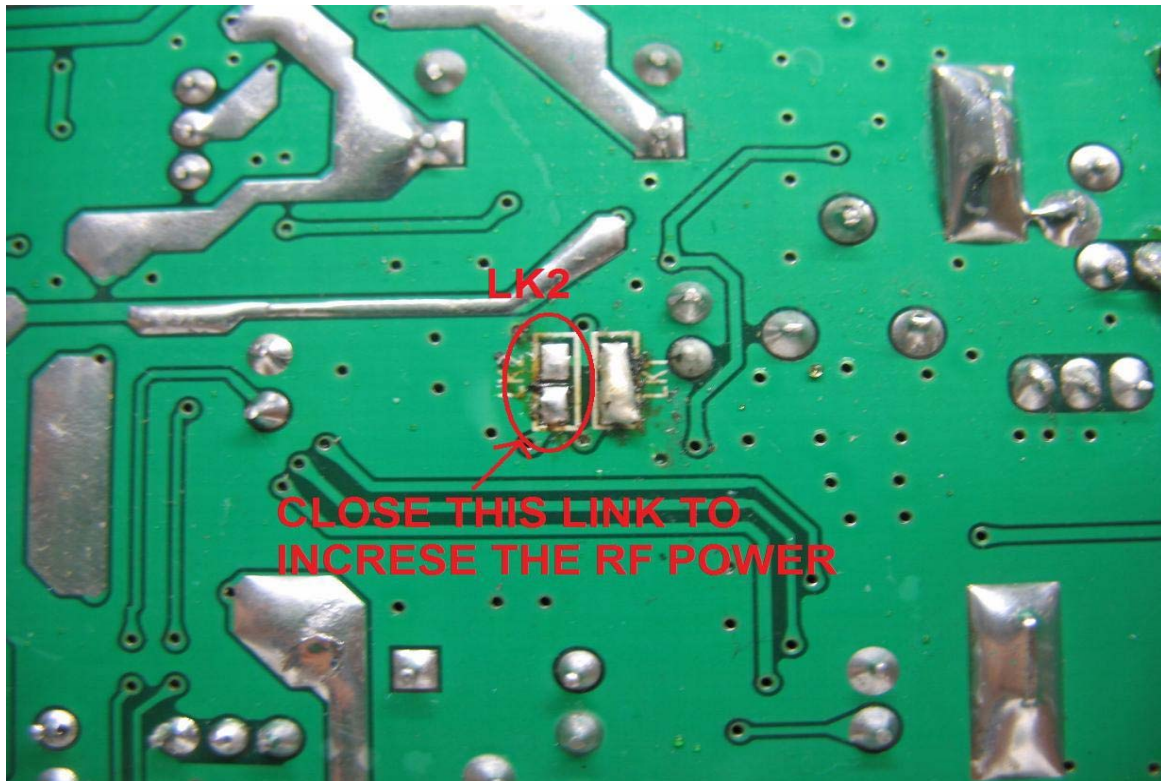
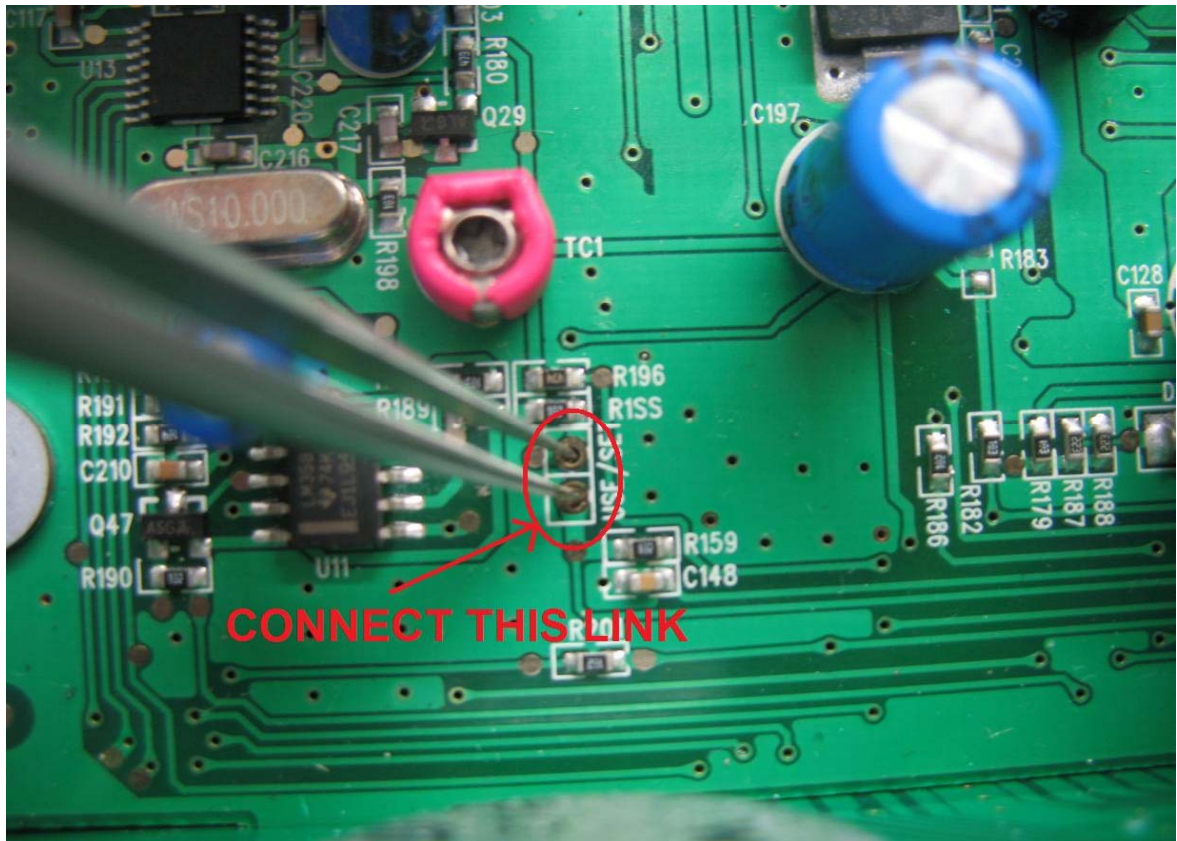


MODIFICATION FOR POWER OUPUT AND SETTING BAND ON MIDLAND 220

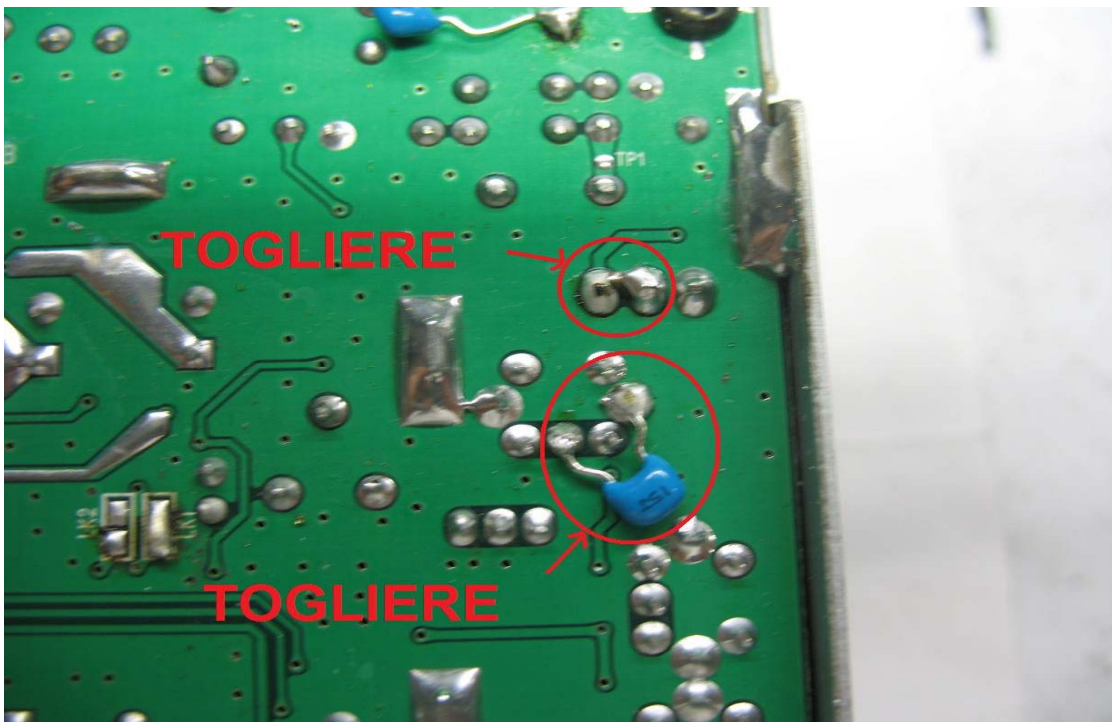


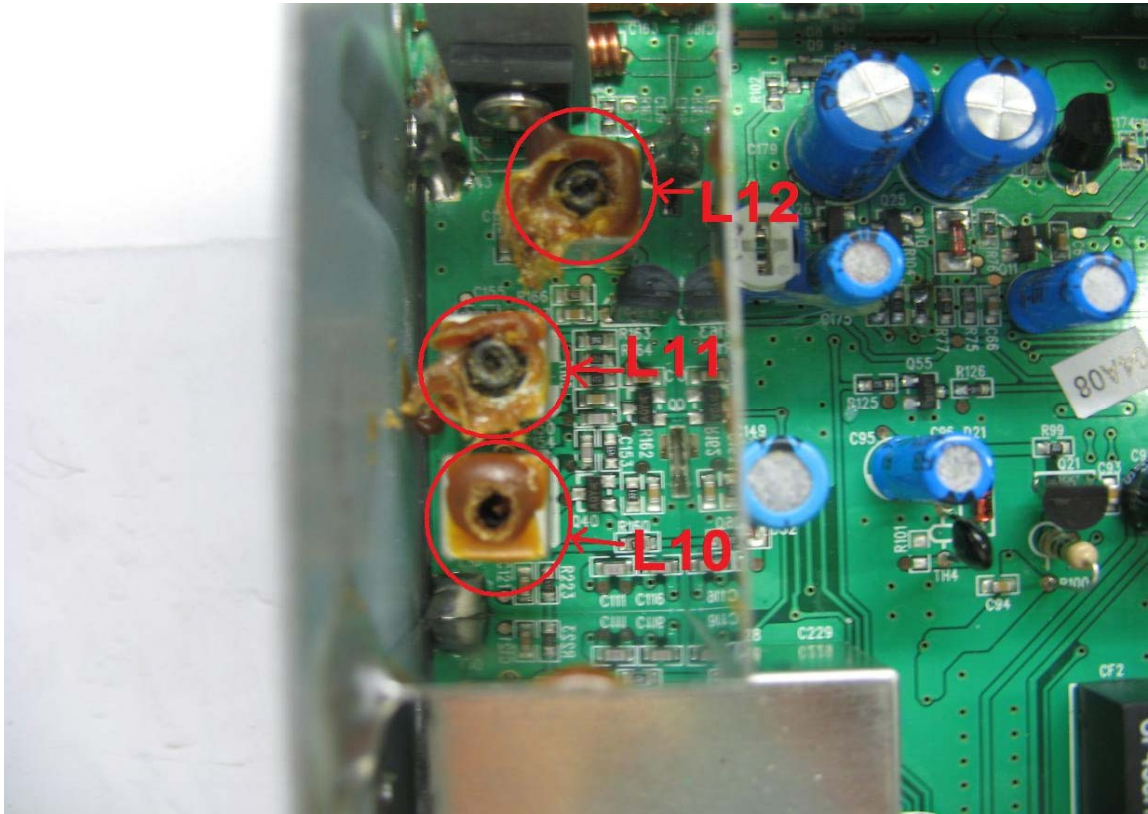
-To increase the RF power output at 10W to close the link shows in the above picture.

-To extend the band is necessary close the link shows in the below picture and to switch on the radio. The display will shows the list of band, the fix icon mean the band already activated, while the blinking icon mean the band not activated, to add the band confirm with the freq. button and vice versa.

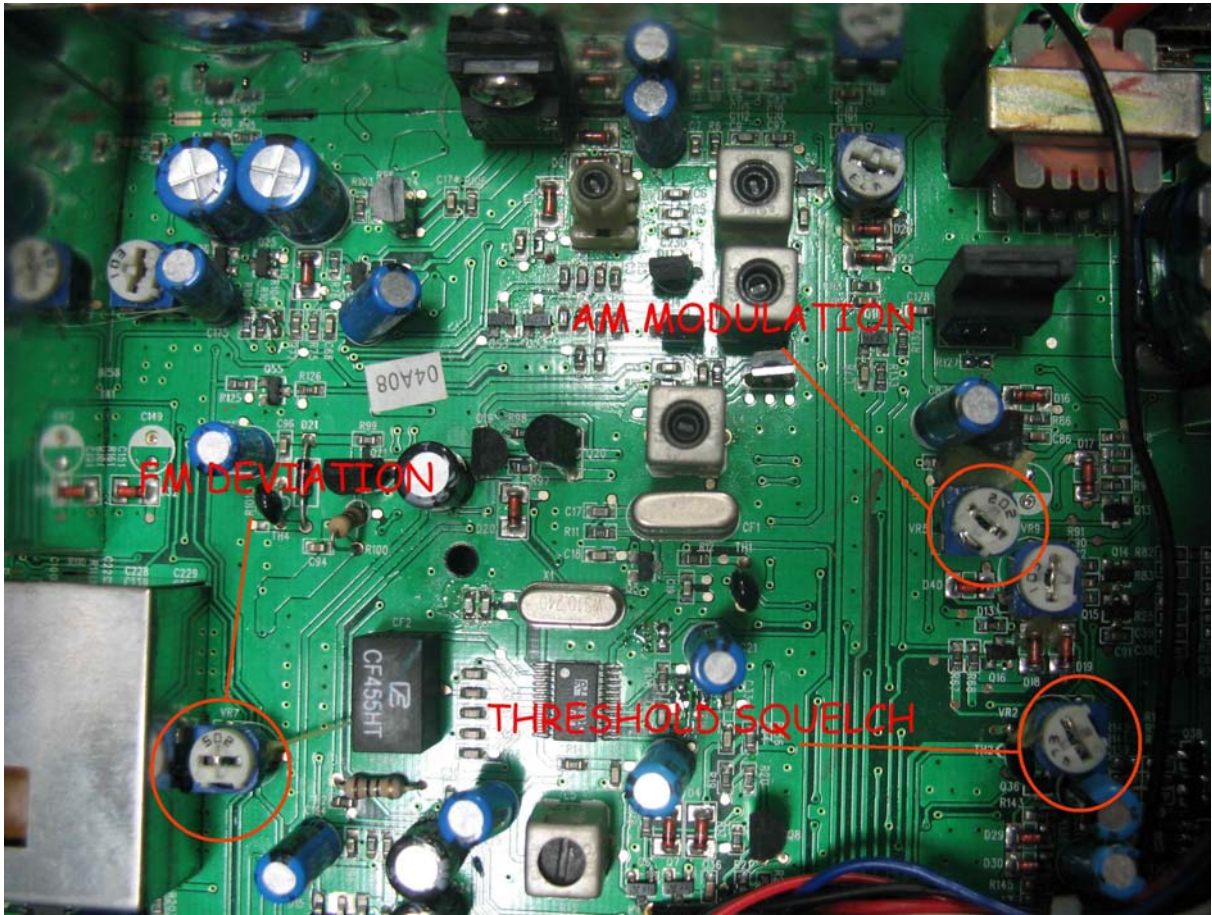


-After to made this modification need adjust the coils and remove the capacitors shown in the below picture.





IN THE BELOW PICTURE ARE INDICATED THE TRIMMERS TO ADJUST THE AM MODULATION, FM DEVIATION AND THRESHOLD SQUELCH



FM DEVIATION

AM MODULATION

THRESHOLD SQUELCH